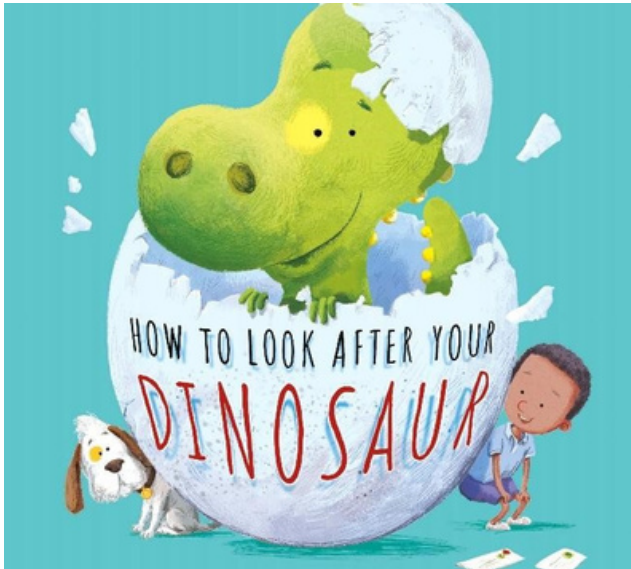


HOME-LEARNING LINK

WEEK 8

This week of NELI Preschool, we are learning how to look after a PET dinosaur! After HATCHING out of its egg and overcoming feeling a little SHY, a PET dinosaur is a handful. Feeding it, washing it, and even cleaning after the dinosaur is a big responsibility. At the end of the day, you'll need to settle him down when he's feeling TIRED. A dinosaur friend is a friend for life!



ONLINE CHALLENGE OF THE WEEK:



Can you find a video of a dinosaur HATCHING? What about an ostrich egg HATCHING? A baby crocodile or lizard? Which one is your favourite?

THIS WEEK'S SPECIAL WORDS



PET

An animal that lives with you and that you look after.



HATCH

When a baby bird or animal breaks out of its egg, it HATCHES.



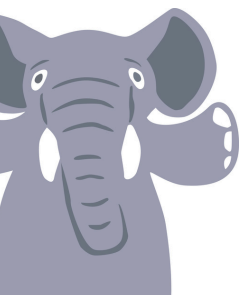
TIRED

When you feel you need to rest or you feel very sleepy, you are TIRED.



SHY

When you feel SHY, you don't want to talk to anyone you don't know well.



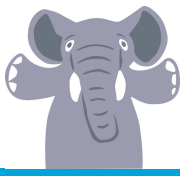
HEY! CHECK THE NEXT PAGE FOR FUN ACTIVITY IDEAS TO DO AT HOME!



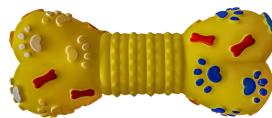
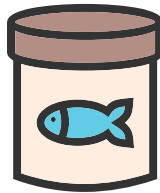
FOLLOW OUR SOCIALS
@TEACHNELI



HOME LEARNING CHALLENGE



WE HAVE PREPARED SOME FUN ACTIVITIES TO DO AT HOME!



Can you match (previous special word!) what you would need for each PET? What else do you need that isn't on here?

Do these activities at home!



- ✦ What time do you start feeling TIRED? Talk about your bedtime routine and how you settle down when you're TIRED.
- ✦ Talk about a time you were feeling a little SHY. What happened? What did you do?



SHARE YOUR FEEDBACK
@ TEACHNELI

